

Bibliotheca Alexandrina



CULTNAT EXPERIENCE IN VIRTUAL REALITY

Presented by:

Ayman KHOURY
Deputy Director of CULTNAT
Bibliotheca Alexandrina

www.cultnat.org

Amman, Jordan, December 2011

Bibliotheca Alexandrina



CULTNAT... establishment and mission

Center for Documentation of Cultural and Natural Heritage
Founded in January 2000
Under the auspices of the Egyptian Ministry of
Communication and Information Technology

Part of its e-heritage programme

Affiliated to Bibliotheca Alexandrina since February 2003
Maintained the support of MCIT

www.cultnat.org



CULTNAT... board of directors

Representative of the Ministry of Communication and
Information Technology

Representative of the Ministry of Culture

Representative of the Ministry of Environment



CULTNAT... establishment and mission

- to carry out the documentation of Egyptian heritage both cultural and natural
- ongoing documentation programs
 - The archeological map of Egypt
 - The architectural and urban heritage of Egypt
 - Egyptian cartographic heritage
 - Egyptian folklore
 - Egyptian arts and music
 - The photographic memory of Egypt
 - Islamic scientific manuscripts
 - The natural heritage of Egypt...
- using the latest information technology in doing so
- cooperating with local and international organisations
- to raise public awareness towards that heritage



Archaeological Map of Egypt



The screenshot displays the 'Archaeological Map of Egypt' software interface. The main window shows the 'Site Information' for 'The Mastaba of Qar'. The interface includes a menu bar (File, Edit, View, Theme, Graphics, Window, Help), a toolbar with various map navigation tools, and a status bar indicating the scale (1:11,142,574).

The 'Site Information' panel on the left lists the following details:

- Site Name:** The Mastaba of Qar
- Period:** Old Kingdom
- Dynasty:** 4th Dynasty
- King:** Khufu
- Site Type:** Necropolis
- Description:** Pyramids complexes of Khufu, Khafre and Menkaure (4th Dyn.). Three small (sub)pyramids of queens to the east, note local museum to the south, the
- PM:** 10-201
- LA:** 602-612
- Number of Sites:** 301
- Old Images:** [button]
- New Images:** [button]
- RM:** [button]
- Site Details:** [button]
- Back:** [button]

The main window displays a 3D rendering of the mastaba structure, a 2D map view, and a detailed view of the mastaba's facade. The facade is decorated with hieroglyphs and a large figure of the king, Qar, holding a staff. The text 'The Mastaba of Qar' is prominently displayed at the top of the facade view.

At the bottom of the facade view, the text 'King's letter-scribe in the presence Qar' is visible, followed by a 'BACK' button.

Eternal Egypt

www.eternalegypt.org



Eternal Egypt www.eternegypt.org





CULUTRAMA





CULUTRAMA





The documentation of Egyptian 19th and 20th century architectural and urban heritage

First programme developed by CULTNAT consisting of:

Systematic inventories of architectural and urban heritage

Photographic documentation

Geographic information systems (GIS)

Databases for information

Collection of massive archival material (maps, architectural drawings, old photographs...)

Downtown Area of Cairo

Initiated in July 2000

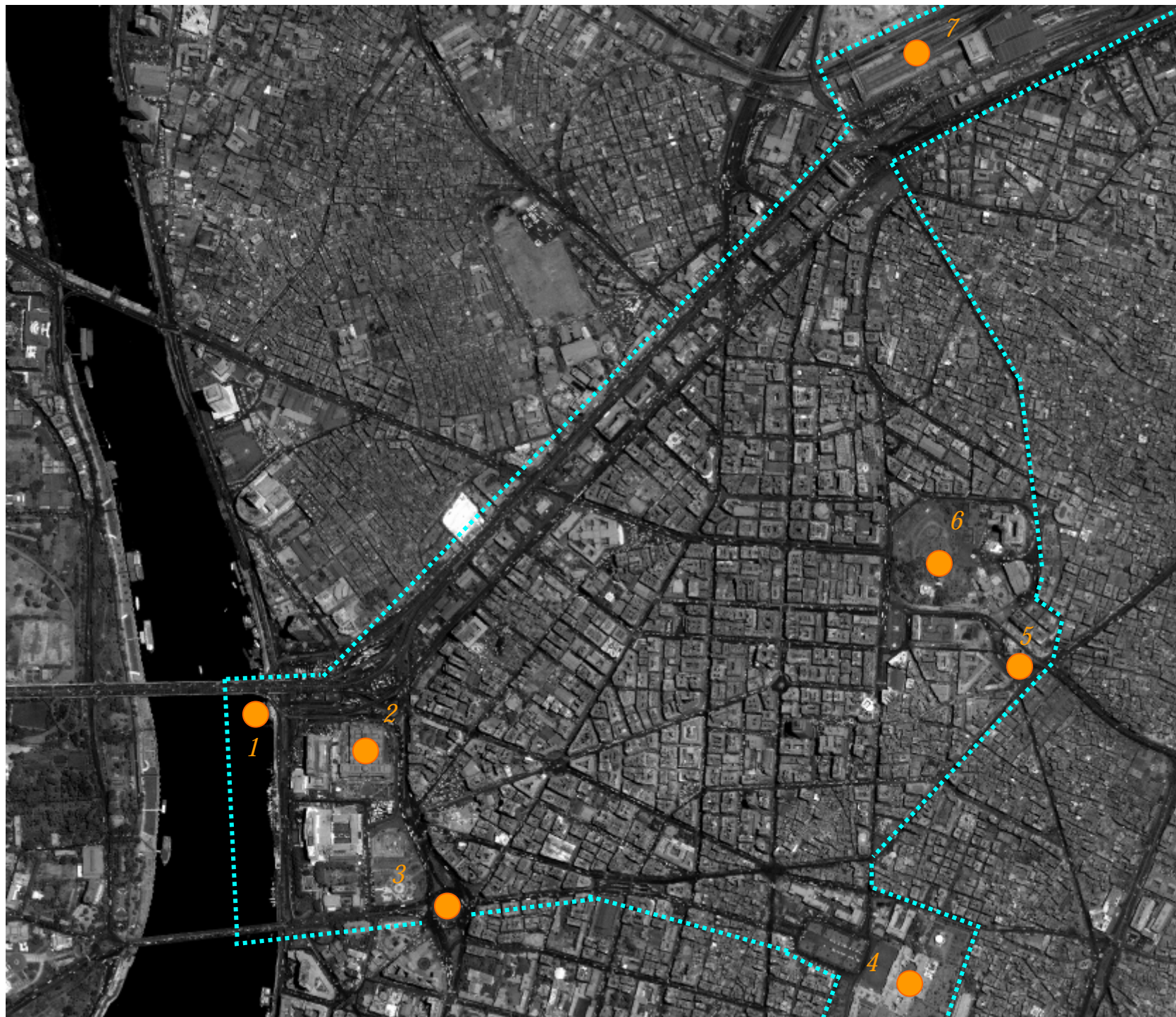
The GIS of historic buildings in the Downtown area

Around 600 buildings surveyed, photographed and documented

Additional archival material (maps, architectural drawings, old photographs...)

Exhaustive bibliography collected

Virtual visits and 360-degrees panoramas for squares and main street intersections



1. Qasr El-
Nil Bridge

2. The
Egyptian
Museum

3. Tahrir
square

4. Abdeen
Palace

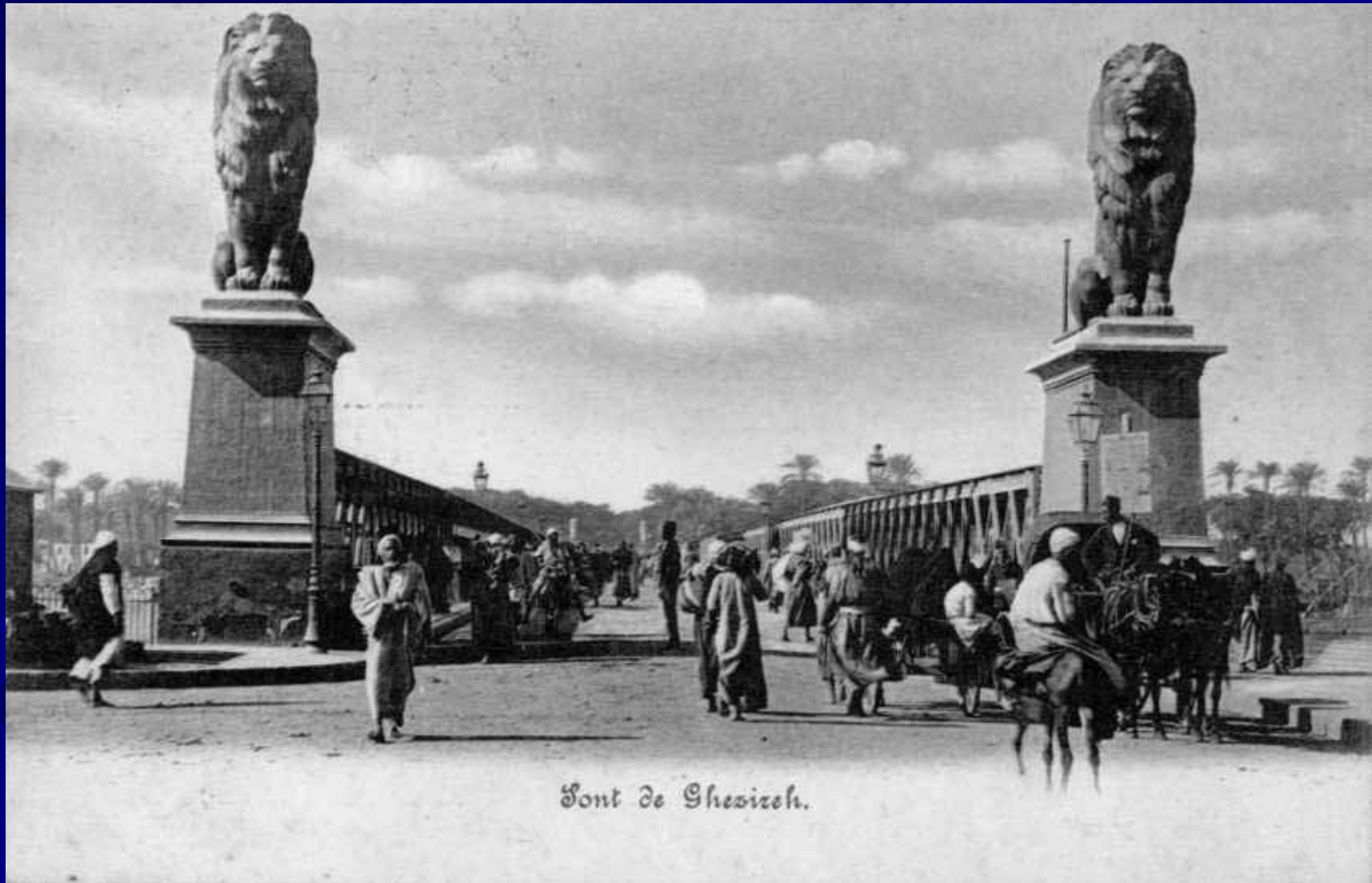
5. Attaba
square

6. Ezbekiyeh
Garden

7. Cairo
Railway
station

■ Limits of
studied area

Old bridge of Qasr El-Nil, the turn of the 20th century



Tahrir square, today



Attaba square at the turn of the 20th century



18 CAIRO. — Opera Square. — LL.

Abdeen Palace



Abdeen Palace

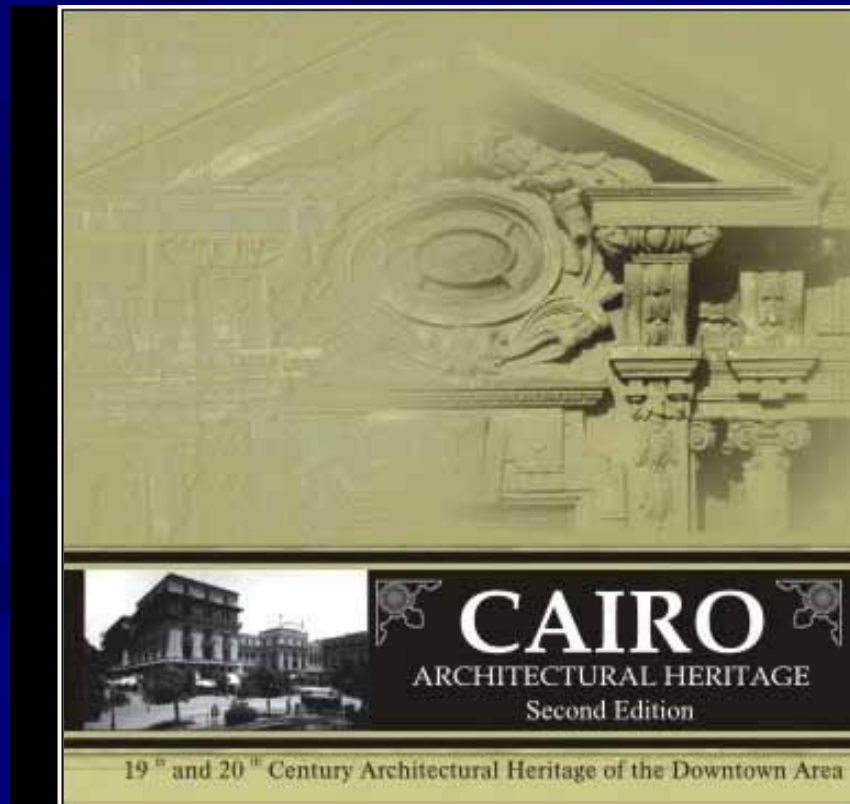


Downtown Area of Cairo

CD-Rom (2nd edition)

Cairo: 19th and 20th century architectural
heritage

The Downtown area



(GIS) of over 540 buildings
information

actual photographs

old photographs

historic maps

panoramic shots of squares

intersections

bibliographic list of readings

city's history 'Cairo in few words'.

CULTNAT

CAIRO

19TH AND 20TH CENTURY
ARCHITECTURAL HERITAGE

About the project

Cairo 'in a few words'

19th and 20th century
architectural heritage

Virtual visits

Bibliography



1 | MAIN
EXIT



CAIRO

ARCHITECTURAL HERITAGE



Talaat Harb square

CAIRO

ARCHITECTURAL HERITAGE



Talaat Harb square (former Soliman Pasha sq., El-Boustan sq. and Qara Qawl Qasr El-Nil sq.)

Talaat Harb square



Building information



Groppi Café and Patisserie

21 Mahmoud Bassiouny st.

Built in 1924

Style Neo-baroque

[Back](#)

[Cadastral map](#)

[Photo album](#)

[Main menu](#)

[More info](#)

[Drawings](#)

© cultnat, 2003



More information

Gropi Café and Patisserie

Former

No. 21 Mahmoud Bassiouny st.

Other add.

Shiyakha El-Ismailiya

Qism Qasr El-Nil

Cadastral map no. 235

Built in 1924

Architect A. Castman

Style Neo-baroque

Influence Art déco

Gross area 1539 No. of floors 6

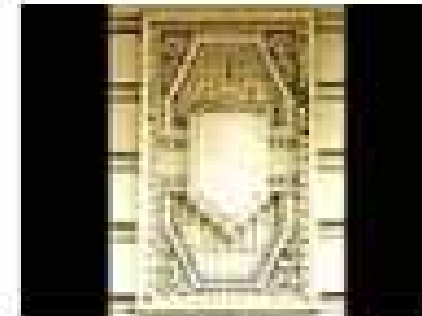
Building use Entertainment

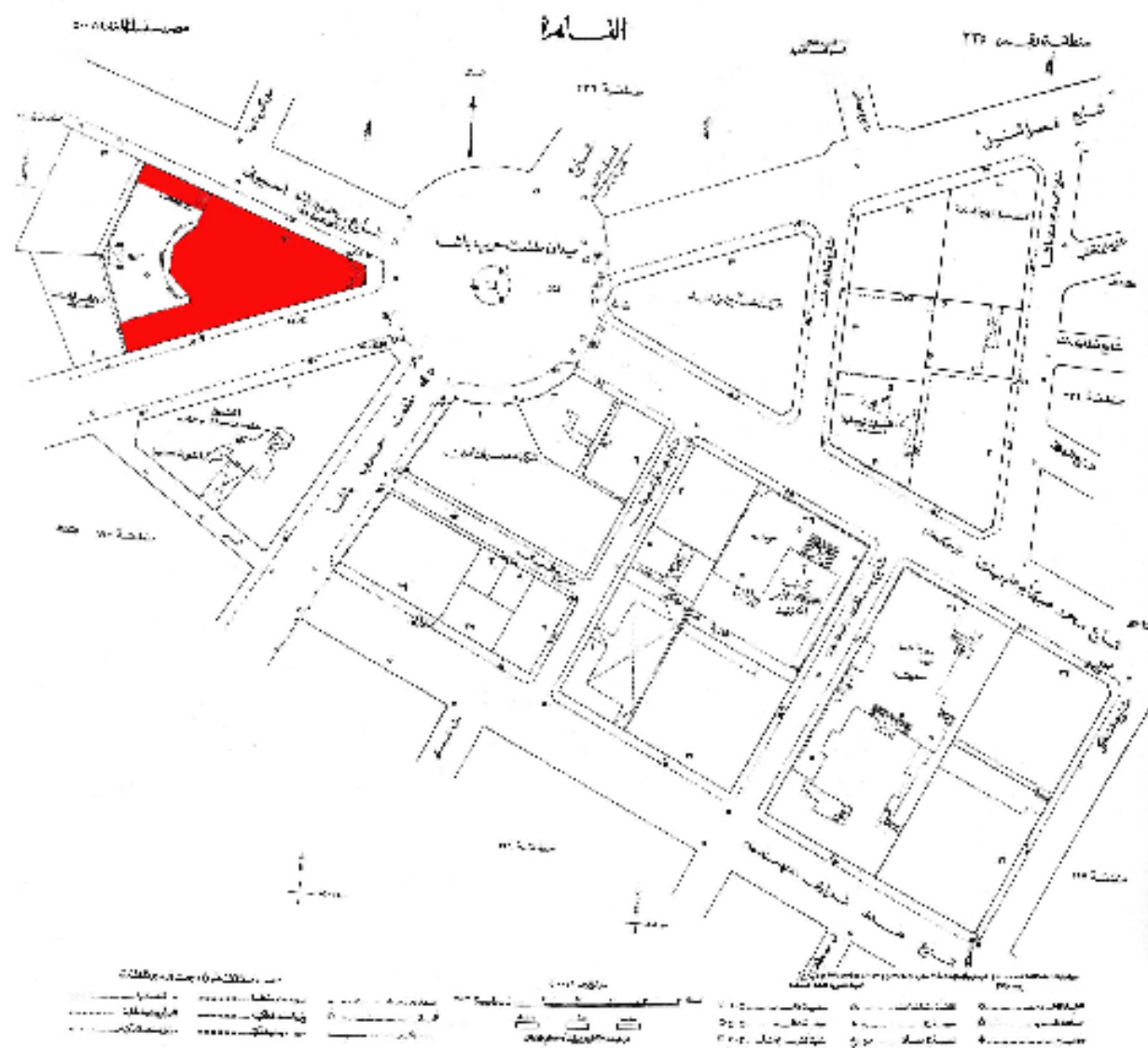
References
Scharabi, M. (1989)
Raymond, A. et al. (2000)
Hawas, S. (2001)

Back

Main menu

© cultnat, 2003







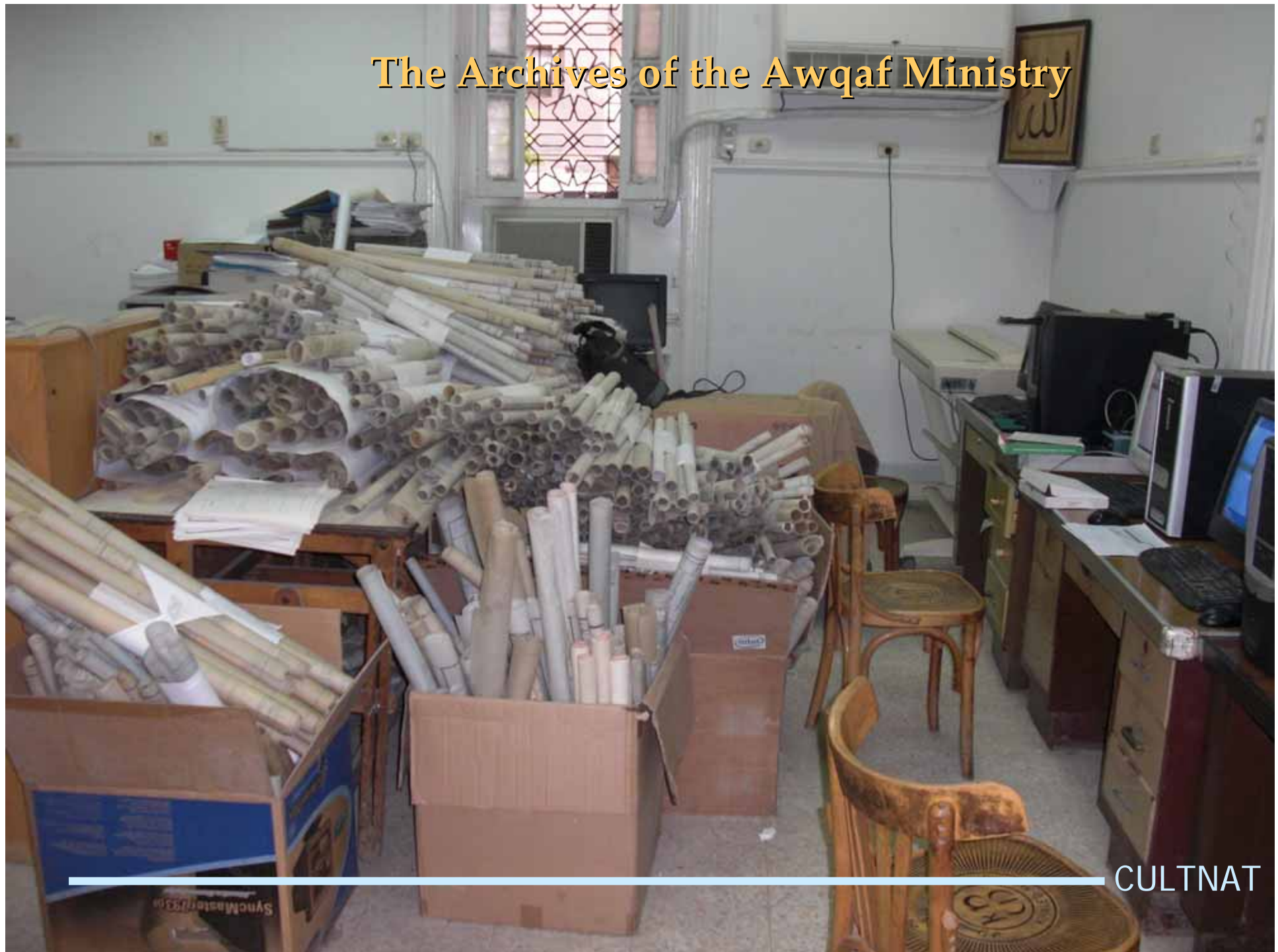


View of Groppi Café overlooking Talaat Harb square
from the Lehnert and Landrock collection, photo taken during the late 1930s





The Archives of the Awqaf Ministry



CULTNAT

The Archives of the Awqaf Ministry



CULTNAT

The Archives of the Awqaf Ministry



Bibliotheca Alexandrina



THANK YOU

www.cultnat.org