

INDICATE

International Network for a Digital Cultural Heritage e-Infrastructure



Cases from Italy: Novel approach to 3D archeology, 3D semantics, open sources and open standards, experiences of geoparsing CulturalItalia

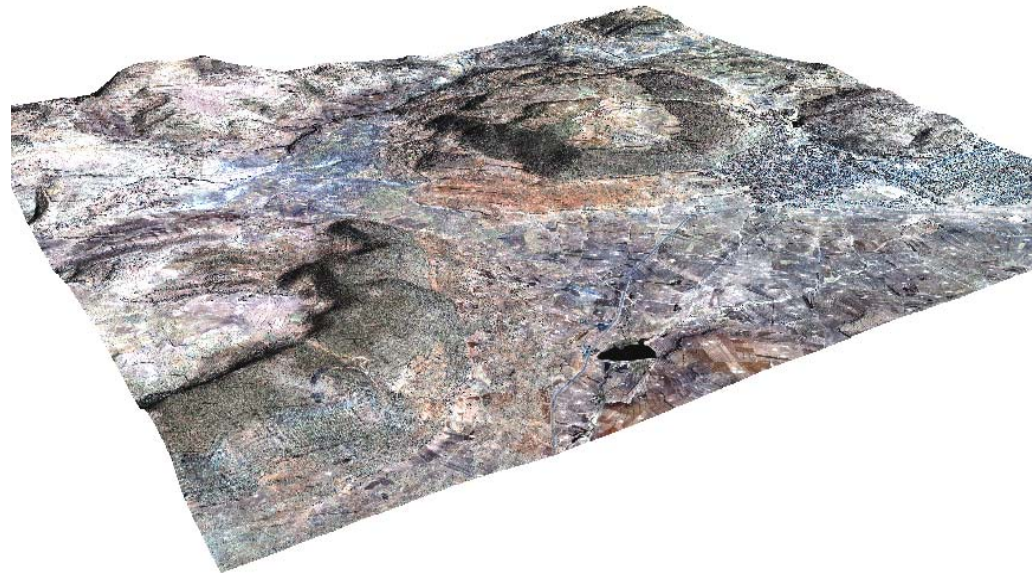
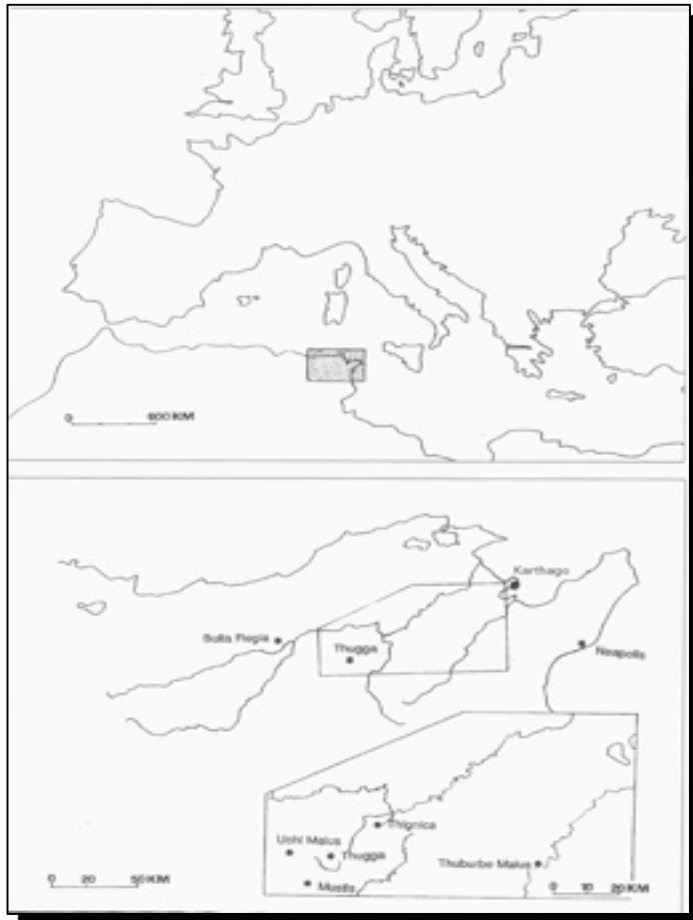
Matteo Lorenzini

Ministry of Cultural Heritage and Activities, Italy

International workshop: Geocoded cultural content
Ljubljana, 7th February 2012

- Uchi Maius: best practices for 3D GIS archeological Solution
- CulturalItalia project: use case for managing georeferenced digital resources

Uchi Maius is located about 100 Km south of **Tunis** in a hilly region; the site is in the lowland of Mejerda in the area called Hencir ed Douamis on the left bank of the Oued Arkou river.



The site was founded by numidian people in the V sec. b. C.

103 b.C after the Bellum Iugurthinum the veterans of Mario were installed in this area

179 d.C Uchi Maius was named as “res publica Uchitanorum Maiorum”; in an epigraph

197 d.C were made a statue of Settimio Severo in forum area.

207 d.C Settimio Severo founding the restored of the forum.

230 a.C under the principate of Severo Alessandro, Uchi obtained the autonomy and the title of Roman Colony

411 d.C were cited in an episcopal conference the Vescovo of Uchi Maius Octavianus.

429 a.C vandal's conquest of Africa

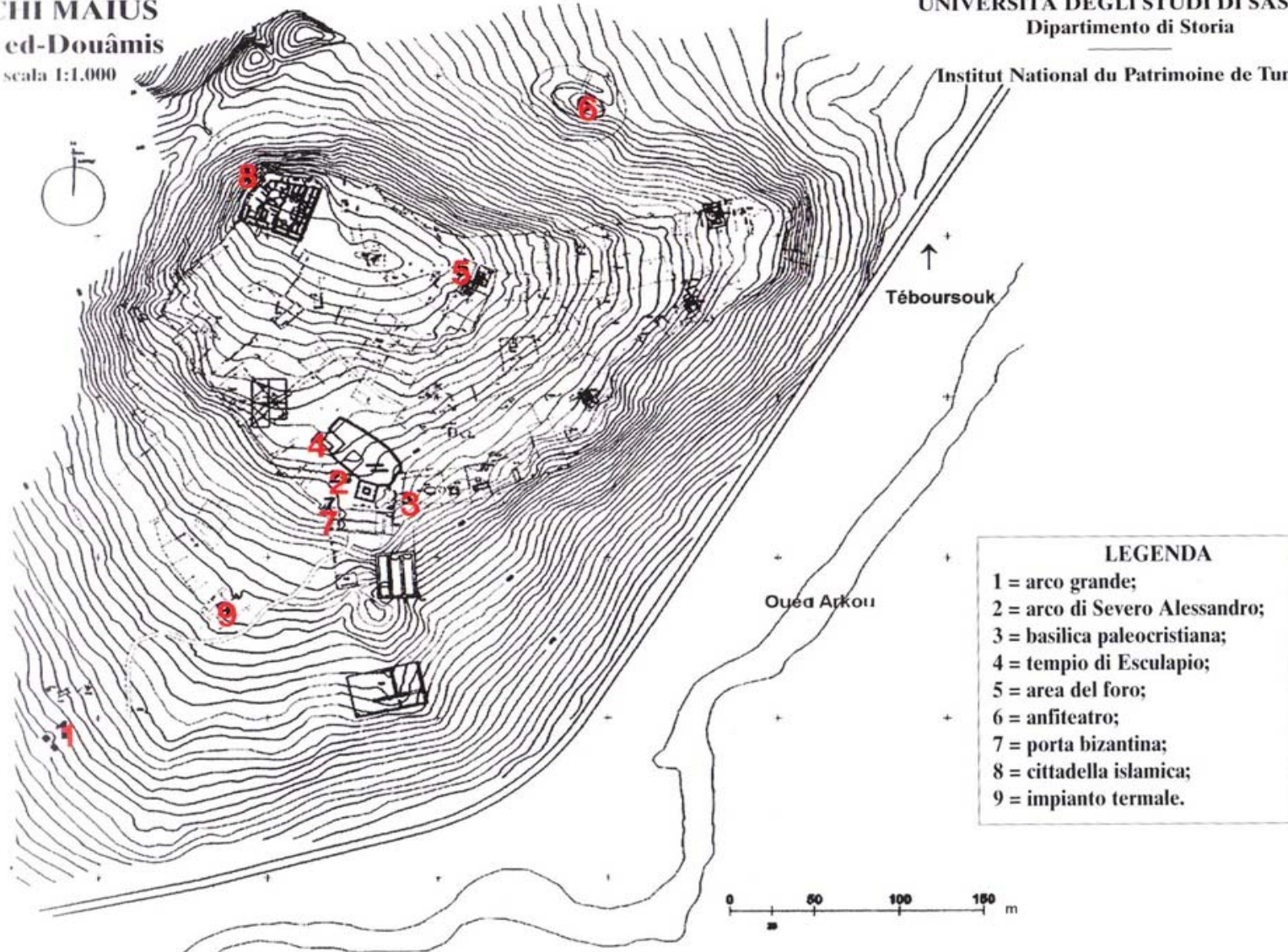
V sec a.C the city was still flourishing. In this period there were many manufacture installations created by reuse of roman objects.

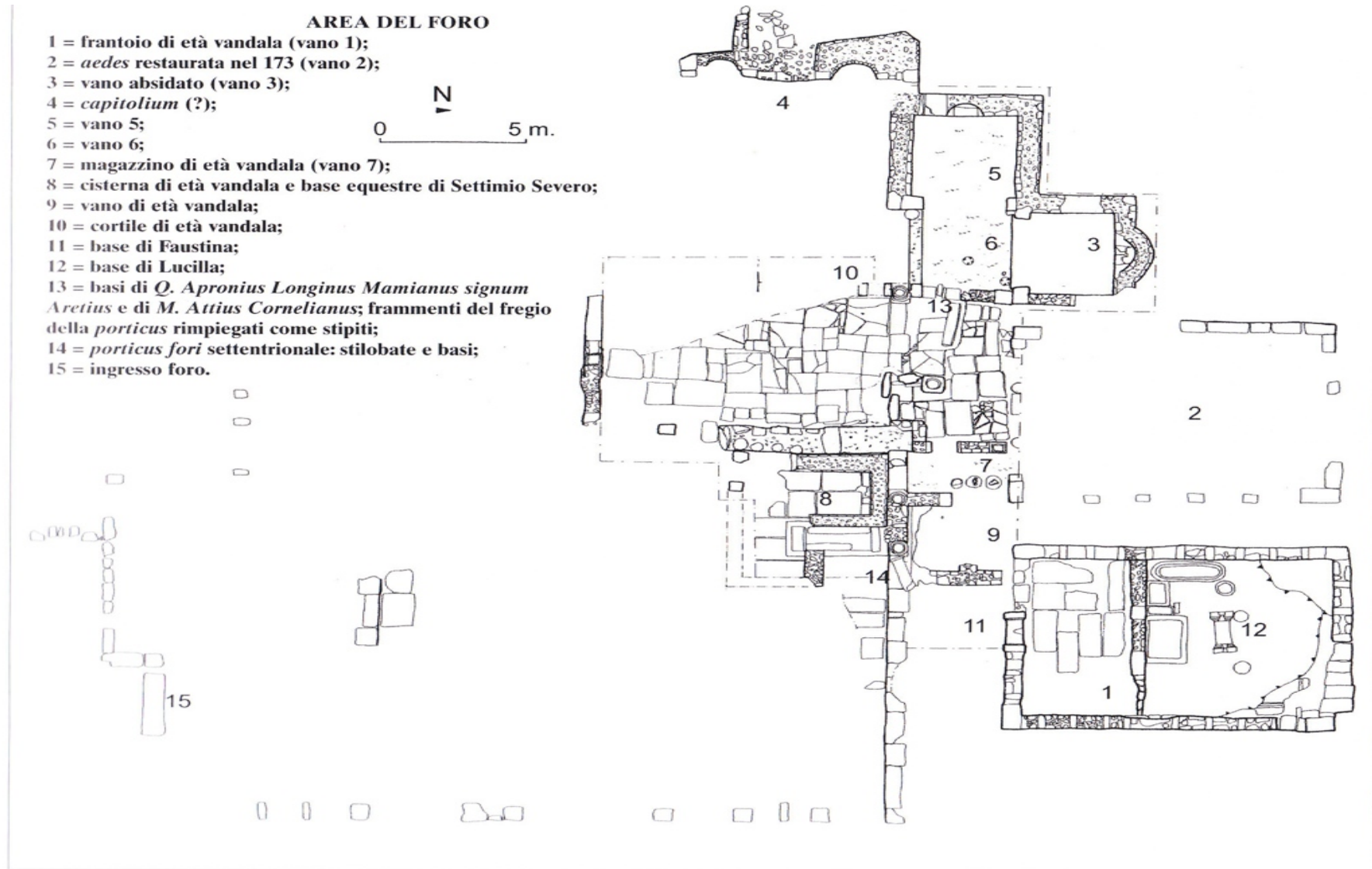
646 d.C were remember the Tripolius.

27 settembre 1882 the city was discovered by the French captain Valentin

UCHI MAIUS
Hr. ed-Douâmis
scala 1:1.000

UNIVERSITÀ DEGLI STUDI DI SASSARI
Dipartimento di Storia
Institut National du Patrimoine de Tunisie





The archaeological process is an unrepeatable operation documenting in an analytical way the excavation. For this reason we need:

SU (Stratigraphical Units Layers/Forms)

Photos

Maps, topographical plans, etc.

GIS platform

To share data in a scientific community, the solution adopted so far is represented by the development of standardized data-models.

But it is not enough !

INDICAT



The best mode to share archaeological data is encoding them through a semantic approach.
And for 3D data?

- ✓ Normally, 3D models are encoded using proprietary format like dwg, 3d shape or 3ds, etc.
- ✓ Models developed by means of proprietary format aren't interoperable.
- ✓ Although they are **standard de facto** it is impossible in general to use them to share the data

Possible solution to the problem is the using of format XML oriented, but it is useful to make a distinction to different XML

	X3D	U3D	KML	COLLADA	IFC	CityGML
geometry	+	+	0	+	++	+
georeferencing	+		+		(IFG) +	++
appearance	+	+	0	++	0	+
topology	0	0		0	+	+
semantics	0			0/+	++	++
linking / embedding	+		++	++		++

Legend: 0 = basic, + = sophisticated, ++ = comprehensive; empty = not supported

- Suitable for **spatial data infrastructure**
- Mappable on appropriate exchange format GML3
- Linkable to any CityGML feature more specialized, functional models or external data sources

It can express four levels to encode the details (LOD)



- It is a subset of GML3 geometries:
 - ▶ Boundaries representation in absolute coordinates
 - ▶ It is directly manageable within 3D GIS / Geo DB

Unfortunately is developed for defining just modern feature



- LOD 0 - Regional model



- LOD 1 - City model



- LOD 2 - City model with explicit roof structure



- LOD 3 - Detailed architectural model



- LOD 4 - Interior Model

Our proposal consist of using of an integrated system composed by:

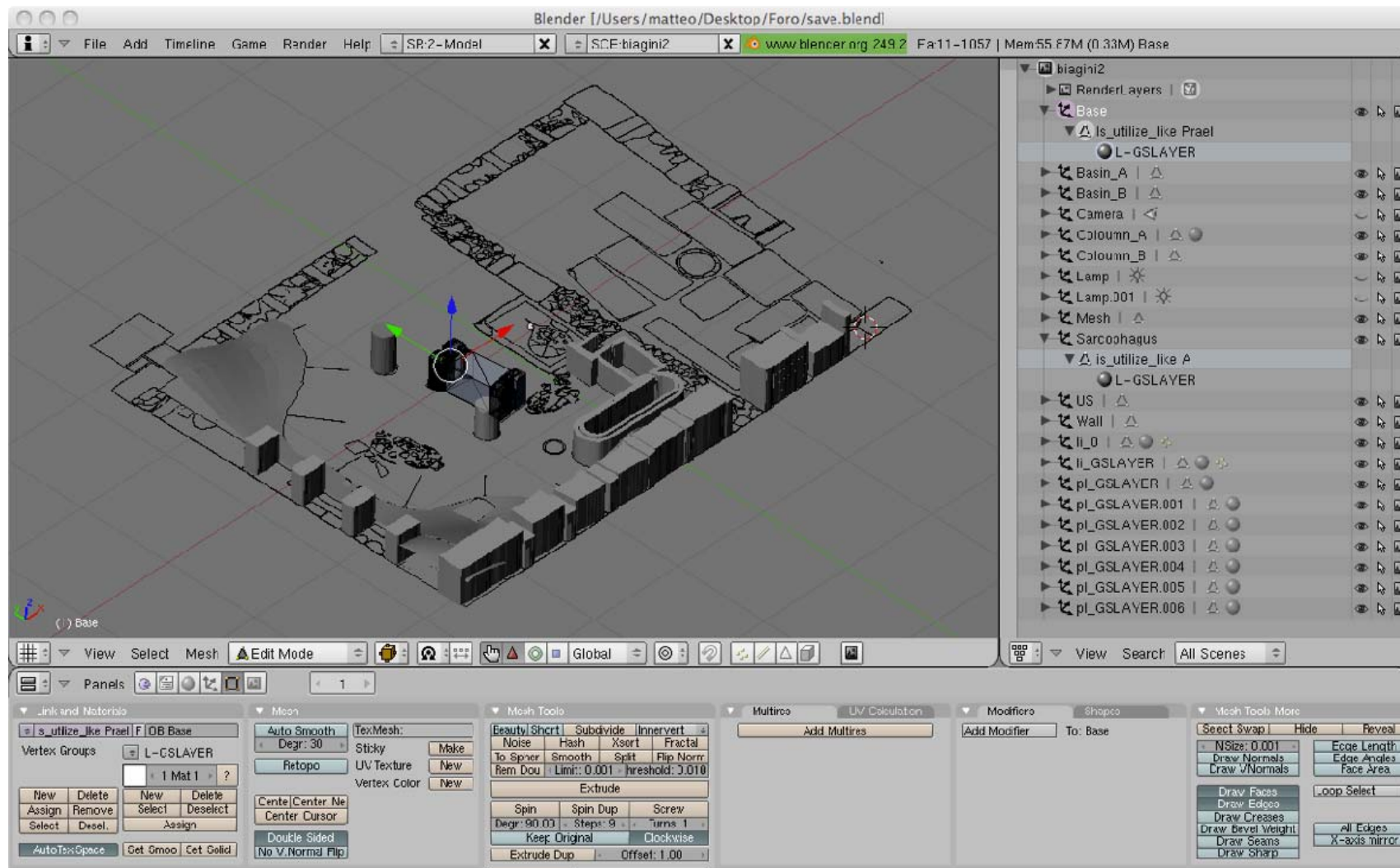
 **blender** Blender software to develop the 3D model from the raw data of the total station

 Protegè software for the development of the archaeological ontology based on CityGML schema

 Grass GIS in order to

→ Geo referenced the model in DTM scene

→ Convert the dataset in GML format

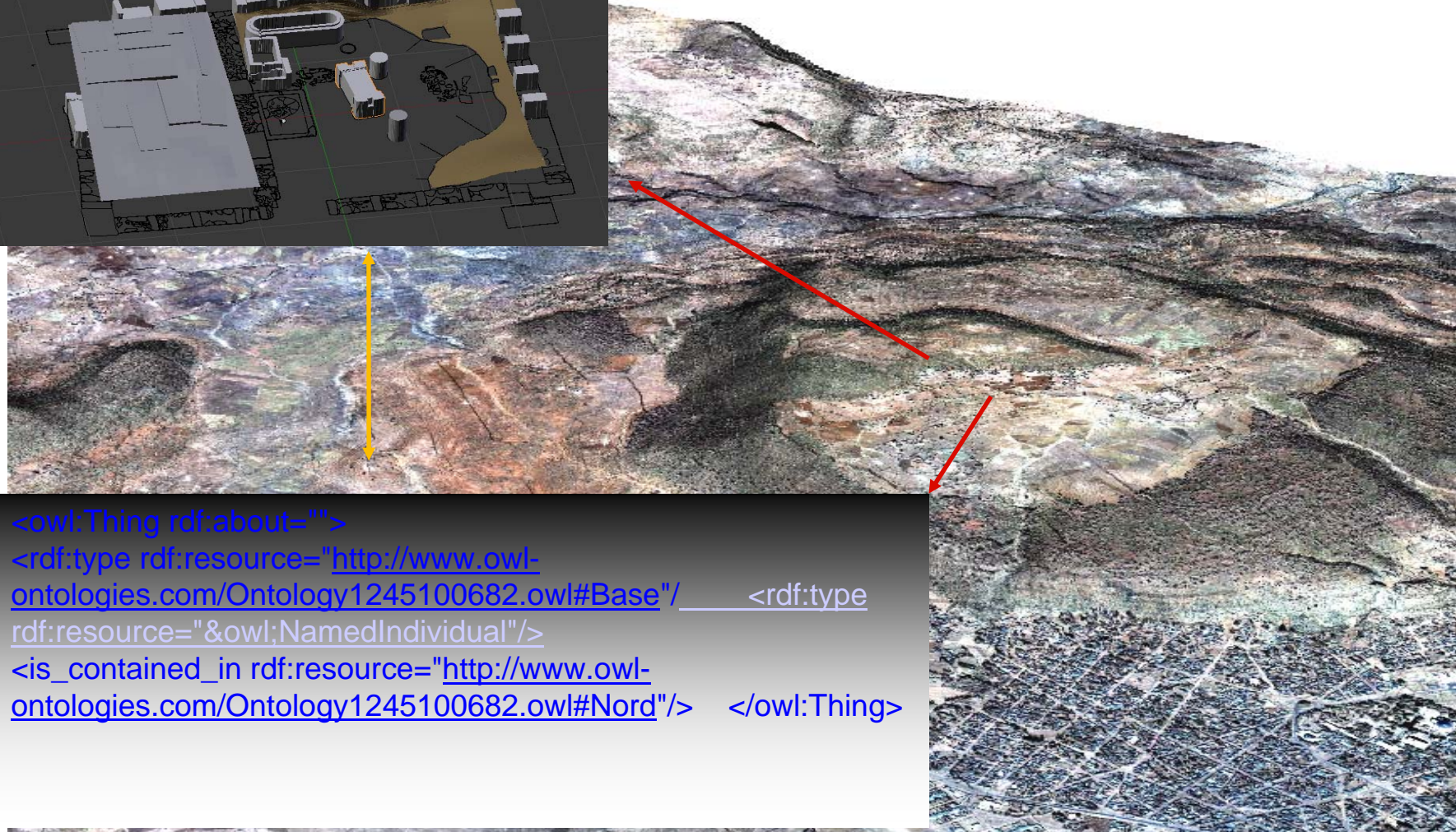
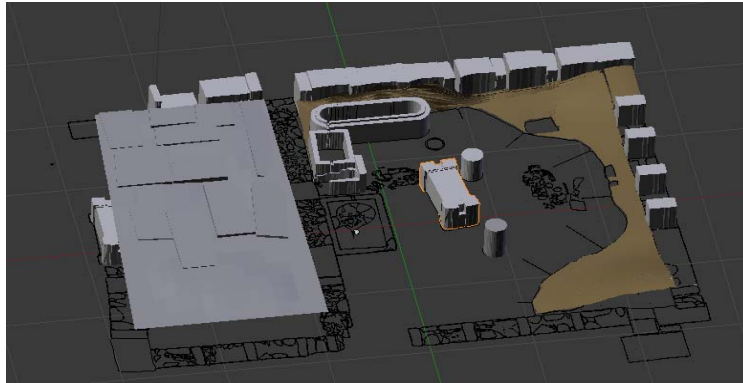


The screenshot displays the Protégé ontology editor interface for the file 'Ontology1245100682.owl'. The interface is divided into several panes:

- Class hierarchy:** Shows a tree structure starting with 'Thing' as the root. Under 'Thing', there is a 'CityObject' class, which contains several subclasses including 'BuildingFurniture', 'BuildingInstallation', 'CityFurniture', 'Basin', 'Mortar', 'LandUse', 'ReliefFeature', 'Site', and 'AbstractBuilding'. 'AbstractBuilding' further contains subclasses like 'Amphitheatre', 'Basilica', 'Cemetery', 'Depot', 'Dock', 'Furnace', 'House', 'OilMill', and 'Temple'.
- Individuals: Lucilla:** Lists individuals A, B, C, D, Lucilla, Nord, Sud, _2.200, and _2000. 'Lucilla' is currently selected.
- Members list: Lucilla:** Shows 'Lucilla' as a member.
- Usage: Lucilla:** Shows 'Found 5 uses of Lucilla' with a tree view:
 - Lucilla
 - Individual: Lucilla
 - Lucilla Type Base
 - Lucilla Type Thing
 - Lucilla is_contained_in Nord
 - Nord
 - Nord contains Lucilla
- Description: Lucilla:** Lists types 'Base' and 'Thing'.
- Property assertions: Lucilla:** Shows an object property assertion 'is_contained_in Nord'.
- 3D Visualization:** A 3D model of a city environment with various buildings and structures, including a large grey building, a smaller white building, and a brown structure, all situated on a dark ground plane.

At the bottom right of the interface, the text 'No Reasoner set' is visible.

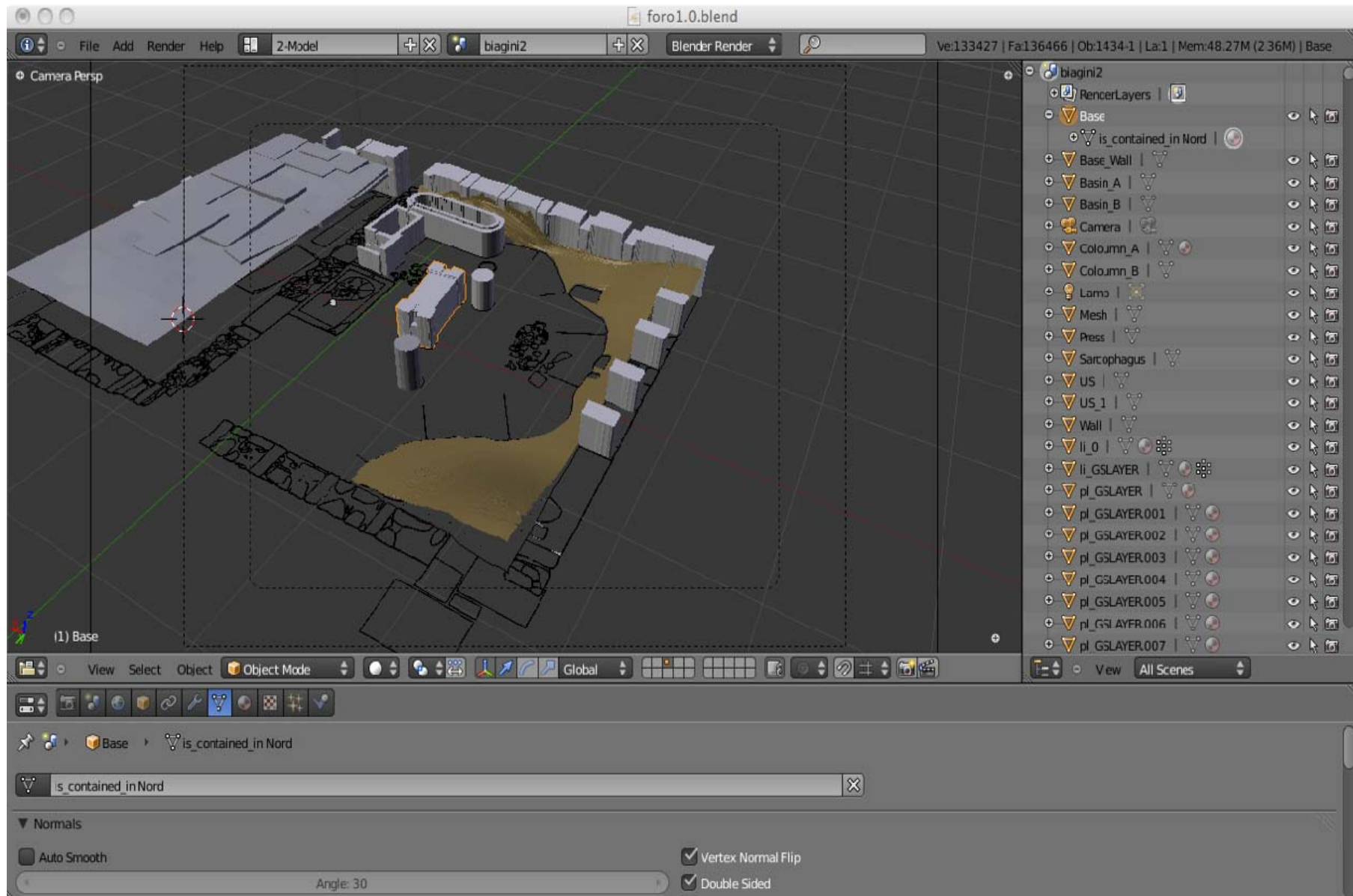
3D object and DTM integration



```
<owl:Thing rdf:about="">  
<rdf:type rdf:resource="http://www.owl-  
ontologies.com/Ontology1245100682.owl#Base"/> <rdf:type  
rdf:resource="&owl;NamedIndividual"/>  
<is_contained_in rdf:resource="http://www.owl-  
ontologies.com/Ontology1245100682.owl#Nord"/> </owl:Thing>
```

INDICAT

3d view and hypergraph navigation



- › The use of Open Format is a good solution for data sharing
- › CityGML and OWL represent a good integration for the management of 3D data
- › This is a good standardization according to standard ISO
- › The implemented ontology allows the reuse of data
- › Open Source solution

Disadvantages

- › The visualization of semantical relations is able to just by Blender with hypergraph

Next steps

- › Integrating CityGML.owl with SKOS thesauri (ex. Ghetty thesaurus)
- › Developing a GUI for WEB GIS in order to view the semantical model in DTM as web application

Culturalitalia promotes an integrated access to the italian cultural resources.

Contents

Metadata Index

More than 2 million of records from the providers data sources (except bibliographic records)

Editorial articles

News and articles from the editorial staff

Web sites selection

More than 5.000 web sites selected

Multimedia

More than 100 Videos

More different from Uchi Maius:

- ✓ Concerning just 2D data
- ✓ Interaction between application profile (PICO) and OAI-PMH repository
- ✓ Social platform (actually in definition)

The PICO Thesaurus is a hierarchical controlled list of terms for the classification of the resources in the Italian Culture Portal.

Its purposes:

- Describing topics of resources – both from external data sources and from editorial board
- Classifying resources, codified with the PICO AP, within the Index of metadata.

The PICO Thesaurus is a controlled list of hierarchical terms, aimed to describe the topic of the resource and to classify the metadata within the Index.

It has been designed to manage an aggregation of resources from cross domain providers.

It is an encoding scheme of PICO AP to refine the simple element dc:subject:

```
<dc:subject xml:lang="en" xsi:type="pico:Thesaurus">  
http://culturaitalia.it/pico/thesaurus/4.0#photographs</  
dc:subject>
```

It is published on a persistent URL:

http://purl.org/pico/thesaurus_4.1.0.skos.xml

PICO Thesaurus
(available in Italian and English)

Who – The cultural life protagonists:

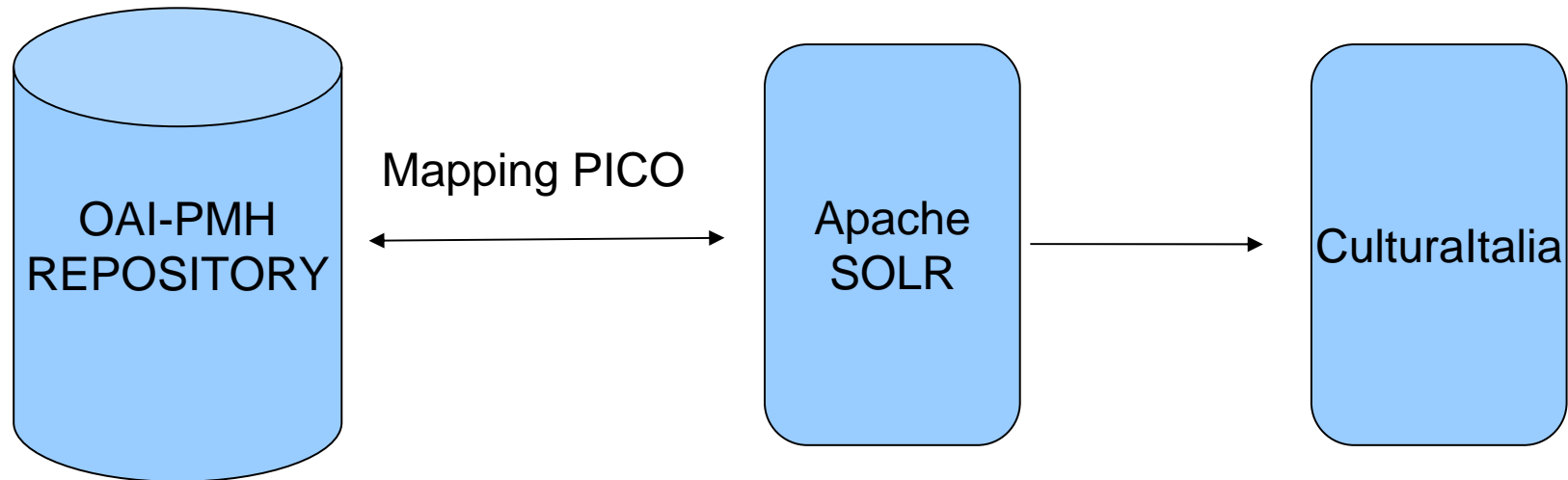
- Persons
- Families
- Public and private bodies

What – Cultural heritage, documentary resources, services, domain areas, activities for the development and the preservation of cultural heritage:

- Cultural repositories
- Cross domain artworks
- Applied art
- Scientific research and education
- Events, services, law

Where – Locations

When – Cronology



```
<dcterms:spatial xsi:type="pico:PostalAddress">  
PlaceName=zona Venezia Nuova ; city=Livorno ; province=LI  
</dcterms:spatial>
```

The screenshot shows the search results page for 'fortezza vecchia livorno' on the cultura italia website. The search bar is highlighted with a red box. The results are categorized into three sections: 'Ricerca nell'indice' (17 results), 'Ricerca negli articoli' (1 result), and 'Ricerca nel catalogo SBN' (17,724 results). A sidebar on the left lists various cultural categories, and a right-hand panel shows applied filters and source data.

cultura italia UN PATRIMONIO DA ESPORARE

Home Percorsi Focus Eventi News Foto Video Link

Ricerca per: **fortezza vecchia livorno** 🔍 ✕ Indice Articoli Opac SBN

sei in: Ricerca - Risultato

Esplora Risultato della ricerca

☰ Consulta l'indice

- Archeologia
- Architettura
- Arti visive
- Ambiente e paesaggio
- Cinema e media
- Musica
- Spettacolo
- Tradizioni popolari
- Letteratura
- Scienze umane
- Cultura Scientifica
- Formazione, ricerca e sviluppo

Ricerca nell'indice
Sono presenti 17 risultati nell'indice.

Ricerca negli articoli
Sono presenti 1 risultati negli articoli.

Ricerca nel catalogo SBN
Sono presenti 17.724 risultati nel catalogo SBN.

Filtri applicati:

- [x] Ambito geografico = Italia
- [x] - Toscana
- [x] - - Livorno

Fonte dati

- ArtPast - catalogo opere d'arte (700)
- Touring Club Italiano (70)
- ICCU Anagrafe delle biblioteche italiane (48)

Categoria

- Beni culturali (700)
- Enti (48)

Tipo

- Oggetto fisico (700)
- Oggetto fisico (70)

Ambito geografico

- Livorno (556)
- Portoferraio (209)
- Piombino (11)
- Campiglia Marittima (7)

» Altri 14 elementi



Veduta della vecchia darsena e della fortezza vecchia

Tipo: Immagine fissa

Categoria: Beni architettonici

Copertura: Non applicabile

Ambito geografico: ~~XXXXXXXXXX~~, Livorno, Italia

Immagini di anteprima

Veduta della vecchia darsena e della fortezza vecchia

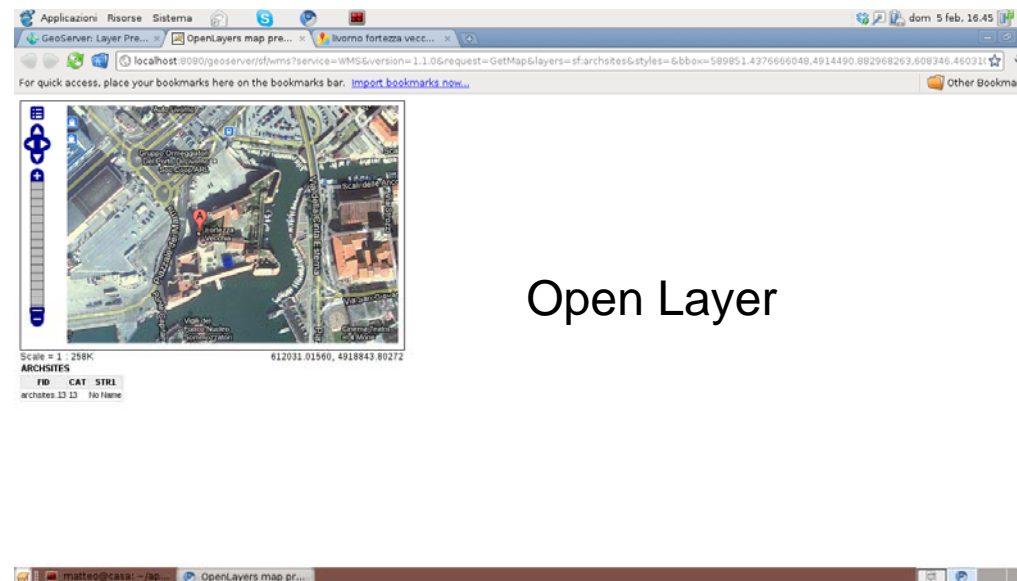
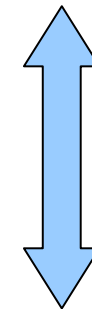
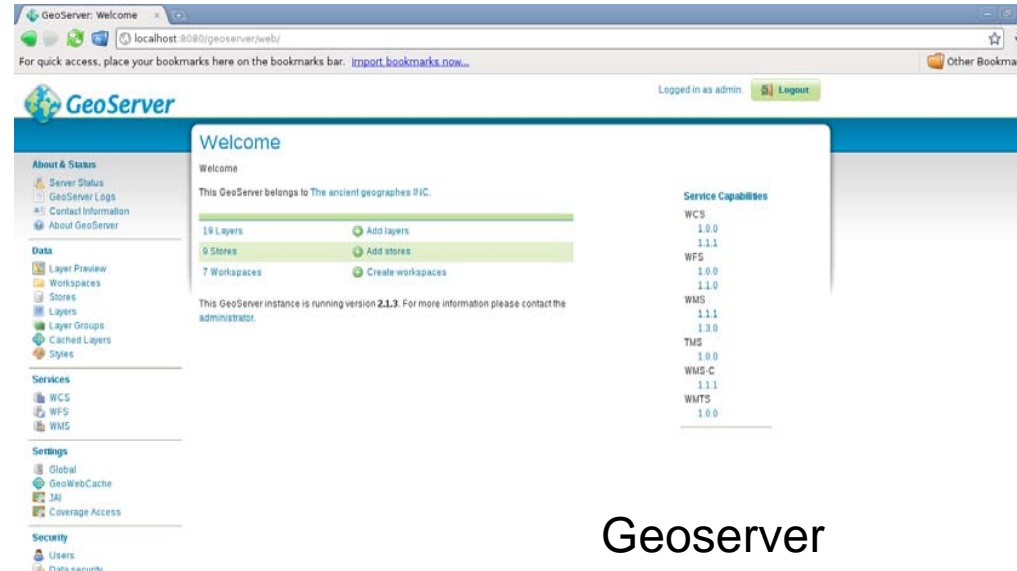
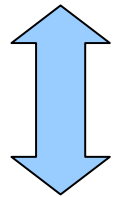
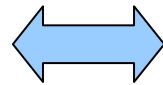
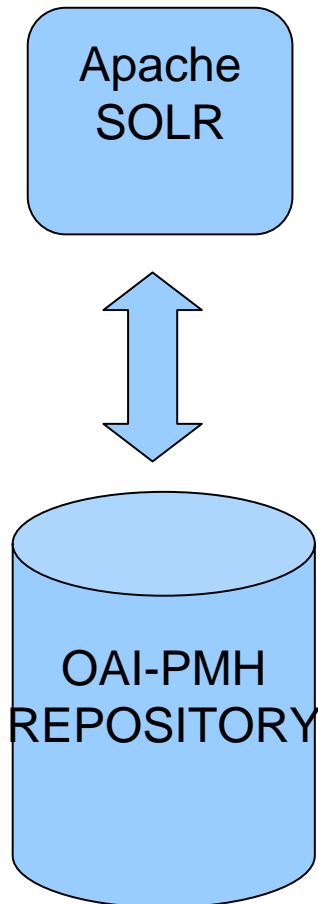
Fonte dati

Archivio Scala Group / Nome del set di immagini rese disponibili su CI

Identificatore: 0075355

 xml [consulta la scheda esterna](#)

```
▼<pico:record xmlns:pico="http://purl.org/pico/1.0/" xmlns:dc="http://purl.org/dc/elements/1.1/" xmlns:dcterms="http://purl.org/dc/terms/"
xmlns:xsi="http://www.w3.org/2001/XMLSchema-instance" xsi:schemaLocation="http://purl.org/pico/1.0/ http://purl.org/pico/1.0/pico.xsd">
▼<dc:description xml:lang="it">
  Realizzata nel 1590-94 sui marazzi del porto pisano, voluta da Ferdinando I e disegnata da Bernardo Buontalenti, era originariamente unita alla Fortezza Vecchia;
  danneggiata nella seconda guerra mondiale, è oggi adibita a parco pubblico; alcuni locali sono stati trasformati in sale per conferenze e mostre.
</dc:description>
<dc:identifier>56263</dc:identifier>
▼<dc:subject xsi:type="pico:Thesaurus">
  http://culturaitalia.it/pico/thesaurus/4.0#mura_fortificazioni
</dc:subject>
<dc:title xml:lang="it">Fortezza Nuova, Livorno</dc:title>
<dc:type xsi:type="dcterms:DCMIType">PhysicalObject</dc:type>
▼<dcterms:isReferencedBy xsi:type="dcterms:URI">
  http://www.touringclub.com/monumento/toscana/livorno/fortezza-nuova.aspx
</dcterms:isReferencedBy>
▼<dcterms:spatial xsi:type="pico:PostalAddress">
  PlaceName=zona Venezia Nuova ; city=Livorno ; province=LI
</dcterms:spatial>
</pico:record>
```



- Open Source solution
- Guarantee the managin of format suggested by INSPIRE directive
- Integration with WMS/WFS/OAI-PMH
- Very good tiling system

- Developing a social GIS platform
- Integration between PICO thesaurus and geographical ontology
- Development of GIS mobile app for Culturaltalia project

INDICAT

Thanks for the attention!

matteo.lorenzini@beniculturali.it