



**INDICATE**  
International Network  
for Digital Cultural  
Heritage e-Infrastructure



# Strategies and future plans workshop

Paris, 7 June 2012

## The INDICATE project

**Antonella FRESA**

Technical Coordinator

Central Institute Union Catalogue Italian Libraries



**INDICATE**  
International Network  
for Digital Cultural  
Heritage e-Infrastructure



# Table of content

- The Digital Cultural Heritage sector: characteristics and needs
- INDICATE project: objectives and activities
- Contribution for the discussion

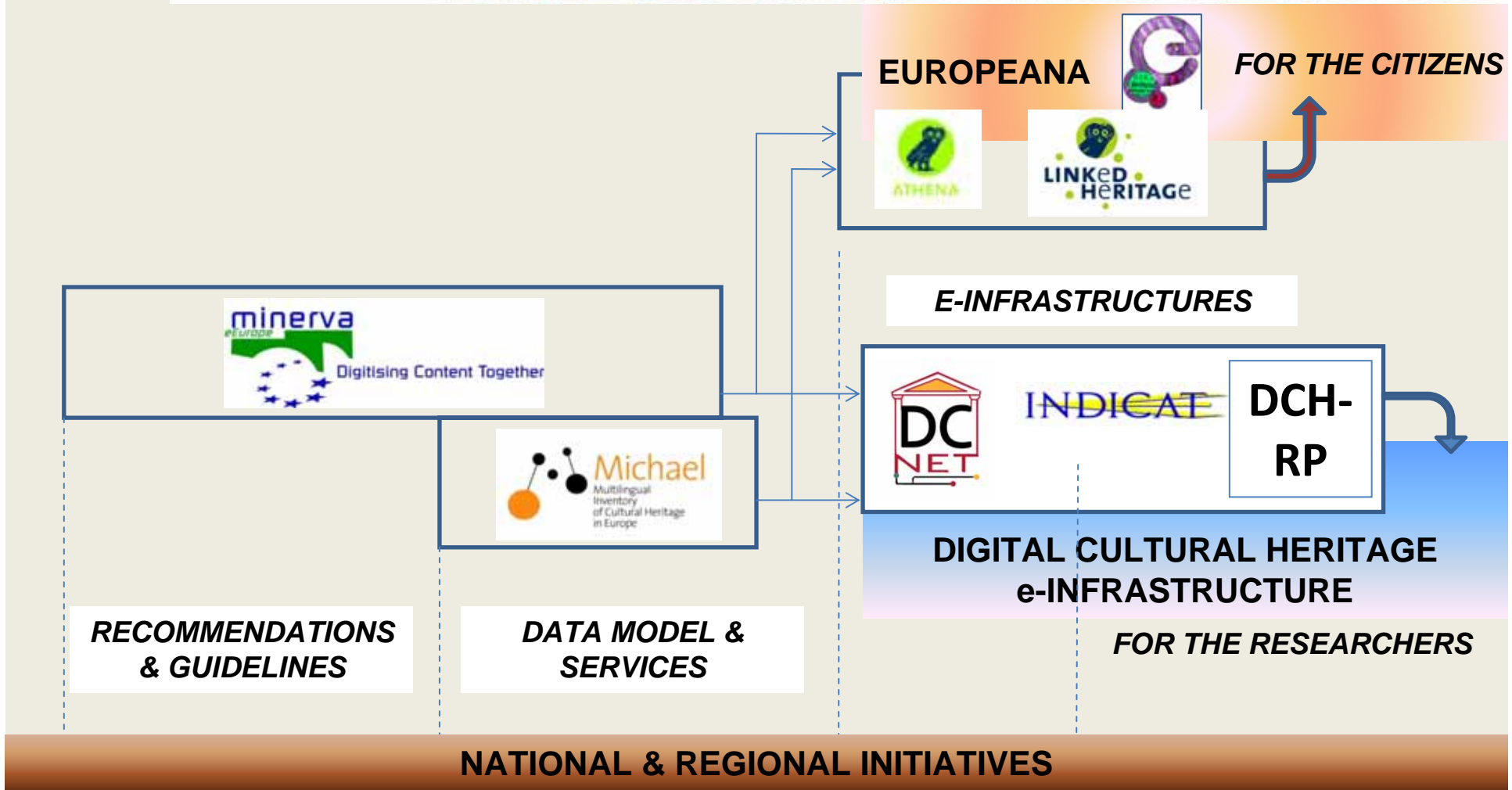


# Initiatives of European Member States in the last 10 year

- Building a shared platform of recommendations and guidelines
- Agreement on common data models
- Experimenting and launching innovative online services (MICHAEL)
- E-infrastructures for the citizens (EUROPEANA)
- E-infrastructures for the research (NREN, NGI)
- International cooperation between Europe and the other regions in the world
- Digitisation within national and regional programmes



**INDICAT**  
International Network  
for Digital Cultural  
Heritage e-Infrastructure



2002

2005

2009

2012

2014



Paris, 7/6/2012





**INDICATE**  
International Network  
for Digital Cultural  
Heritage e-Infrastructure



# Digital cultural content characteristics

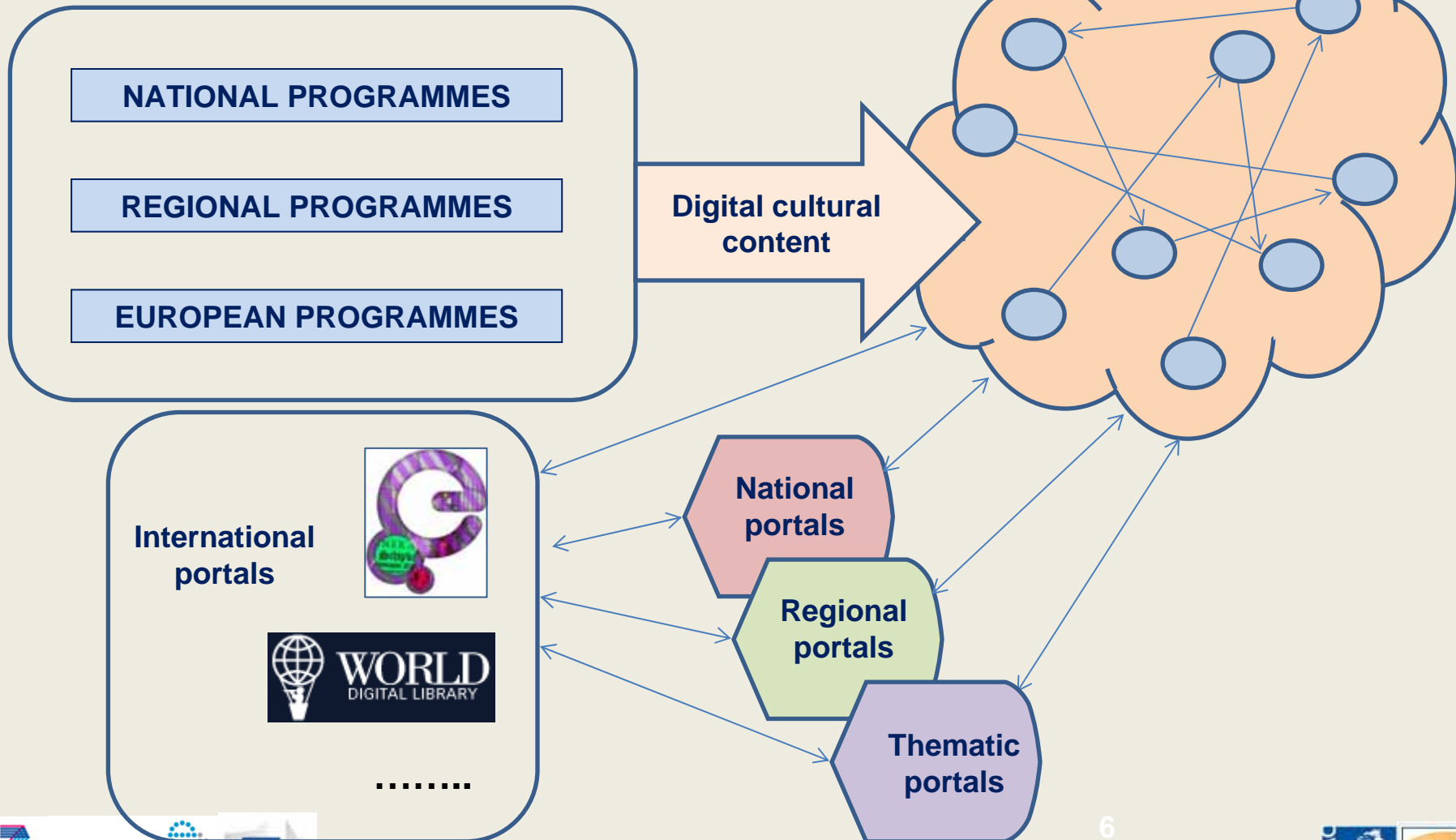
The **amount of digitised material** is growing very rapidly

- **National, regional, European and world-wide programmes** support the digitisation of the content of Museums, Libraries, Archives, Archaeological sites and Audiovisual repositories
- The generation of digital cultural heritage is accelerated also by the impulse of **Europeana** that is fostering the European cultural institutions to produce even more digital content
- Digital cultural heritage content are **complex and interlinked** through many relations



# Towards a DCH e-Infrastructure

Data Continuum





# The needs of the DCH sector

1. High quality **information technology** management, to ensure trust, availability, reliability, long term safety of content, security, preservation and sustainability;
2. **Access facilities** to the final users (*the researchers*) who will search into the DCH e-Infrastructure for their research and to the cultural institutions that will deliver their data to the DCH e-Infrastructure;
3. **Interoperation** among existing cultural heritage repositories and of cultural heritage data with research data.



# Expected impacts

- **e-Infrastructures**

The adoption of the e-Infrastructures by the digital cultural heritage community will open new scenarios of use and exploitation

- **Cultural Heritage**

Cultural managers will become more aware about the potential that the e-infrastructures can offer to their work: storage, preservation, access services for the cultural institutions, etc.

- **Research**

A better integration of the cultural sector with the e-Infrastructures will enable the research of new advanced services and applications

- **Other sectors**

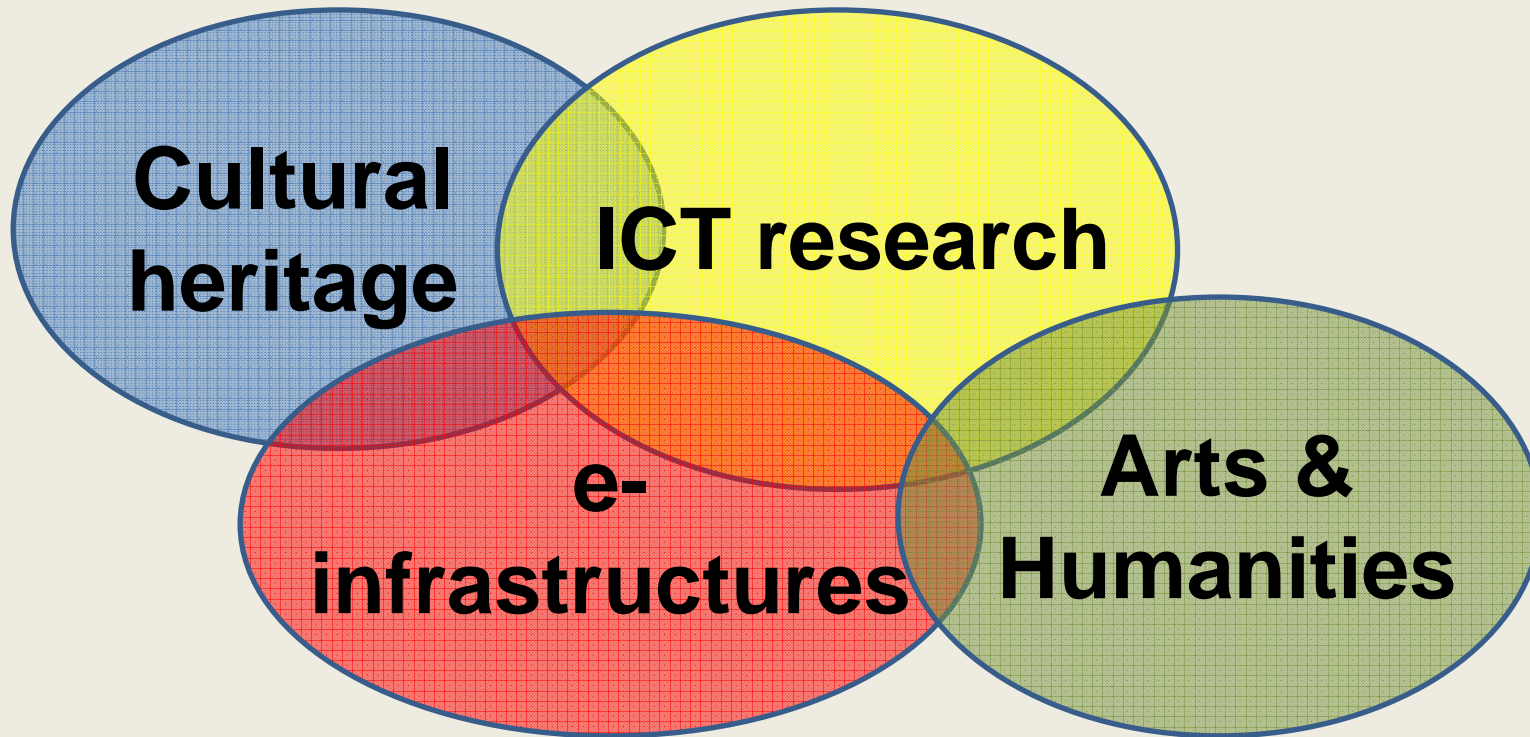
Digital cultural content will become more usable and re-usable for education, cultural tourism, long-life learning, non-professional cultural interests, creative industry, etc.





# Key players

- **Key players from the DCH:**
  - Ministries of Culture
  - Cultural institutions
- Cross-domain: museums, libraries and archives together
- **Key player from the research:**
  - Ministries of Research
  - Researchers in the Humanities
  - Researchers in ICT applied to CH
- **e-Infrastructure providers**



Cooperation and coordination among these sectors is at the core of an e-infrastructure for the Digital Cultural Heritage



# Preparatory actions

- To define **priorities** among the services to be deployed
- To consult and to advocated with **stakeholders**
- To engage with **programme owners**
- To improve **awareness**: standards, who-is-who, ...
- To promote **trust building**, covering different aspects and including organisational, operational and legal issues
- To run **experiments**: pilots and use case studies
- To open **international cooperation**
- To establish an **e-culture community**



# INDICATE – a concrete approach

- To foster the **international cooperation** of eInfrastructures providers and cultural heritage users
- Target **regions**:
  - Mediterranean region, (Egypt, Turkey and Jordan)
  - Cooperation with China in liaison with the EPIKH Grid School
  - exchanges with South America in the frame of experiments for live distributed performances

Started in September 2010

A project funded by EC FP7 e-Infrastructures



**INDICATE**  
International Network  
for Digital Cultural  
Heritage e-Infrastructure



# The consortium of INDICATE

## 10 partners from 8 countries:

### Egypt

- Center for documentation of cultural and natural heritage (CULTNAT)



### France

- Ministère de la culture et de la communication (MCC)



### Greece


- National Technical University of Athens (NTUA)



### Italy

- ICCU  

- Consortium GARR 

- COMETA 

### Jordan

- Department of Antiquities



### Slovenia

- Avtorska Agencija za Slovenijo Doo 

### Spain

- Fundacio privada I2CAT, internet i innovacio digital a Catalunya



### Turkey

- Türkiye Cumhuriyeti Kültür ve Turizm Bakanlığı





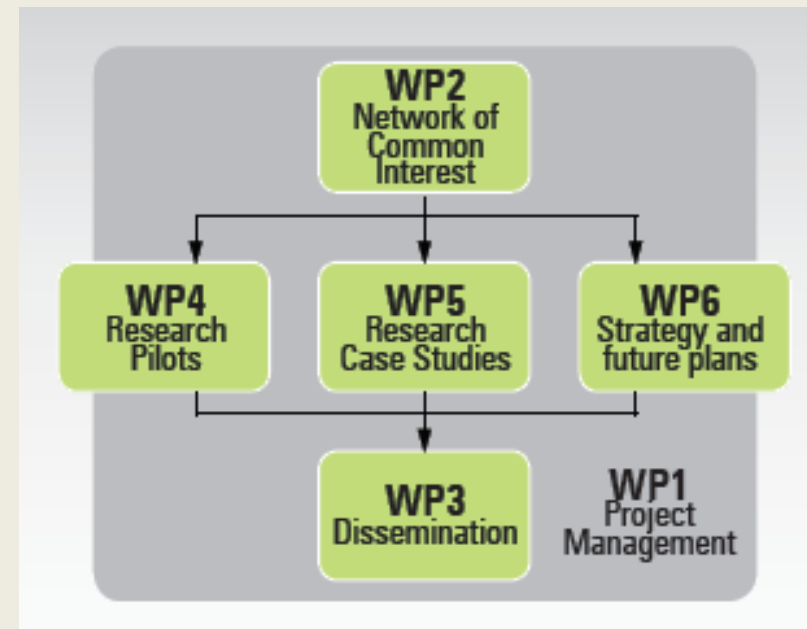
## Key actions

1. **Pilots and case studies** as demonstrators of the processes relevant to establishing cultural initiatives on the e-Infrastructure platforms
2. **Coordination of policy** regarding the use of e-Infrastructures for digital cultural heritage in countries all around the Mediterranean
3. **Dissemination** and contribution to the establishment of the DCH Community



# The workplan

- **Management (Wp1)**
- Developing a **network of common interest (WP2)**
- Research **pilots and case studies (WP4 & 5)**
- **Strategies and future plan (WP6)**
- **Dissemination (WP3)**





INDICAT  
International Network  
for Digital Cultural  
Heritage e-Infrastructure



## Pilots

To study and to experiment the migration of two existing e-Culture applications to the e-Infrastructure platforms:

- Semantic Search pilot
- e-Collaborative Digital Archives

The experience gathered within the pilots is then analysed and is a key input to the best practice work.

The pilots are accessible via the **eCulture Science Gateway** that allows to create and to manage digital repositories on the Grid





# Case studies

Case Studies aim to analyse the potential for e-Infrastructures to be used to overcome long-standing problems in e-Culture.

Three key problems have been address, each one supported by a dedicated workshop:

- Long Term Preservation (Ankara workshop)
- Virtual exhibitions (Amman workshop)
- Geo-coded Digital Cultural Content (Ljubljana workshop)



# The network of common interest

It combines:

- regional, national and international levels,
- bottom-up (working groups) and top-down (Joint Programming) approaches

**Working groups:** experts seconded by their cultural, research and infrastructure organisations

**Cooperation with other networks and projects:** EPIKH, CHAIN, EUMEDGRID-Support, EUMEDCONNECT2, LINKED HERITAGE,

....



INDICATE  
International Network  
for Digital Cultural  
Heritage e-Infrastructure



## The future

INDICATE will complete its activities in a few months

INDICATE belongs to a **family of projects** that are investigating how the digital cultural heritage can exploit the facilities and services offered by the research infrastructures

The **Network of Common Interest** is the living body that will sustain the future activities, towards the implementation of an e-infrastructure for the digital cultural heritage.



**INDICAT**  
International Network  
for Digital Cultural  
Heritage e-Infrastructure



# Keywords for discussion

Interoperability

Joint Programming

Digital preservation

Access and Openness

Persistent Identifiers & Linked Data

Public-Private-Partnerships

International cooperation



**INDICATE**  
International Network  
for Digital Cultural  
Heritage e-Infrastructure



# Thank you

[www.indicate-project.org](http://www.indicate-project.org)

Antonella Fresa  
INDICATE Technical Coordinator  
[fresa@promoter.it](mailto:fresa@promoter.it)